

40006 40mm高脚无声两段阀芯

40mm high base two phased without click sound cartridge

阀芯技术参数

Technical Characteristics of The Cartridge

开启角度：12° / 23° 旋转角度：110° 最高使用温度：90°C
 Max On/Off angel : 12° / 23° Max Cold/Hot turning angel : 110° Max temperature : 90°C

建议锁紧力矩：10~15Nm 冷热操作力矩：0.2~0.4Nm (任何水温)
 Tightness of hex nut torque : 10~15Nm Cold / Hot operation torque : 0.2~0.4Nm (Under any water temp)

开关操作力矩：0.5~0.7Nm (任何水温)
 On/Off operation torque : 0.5~0.7Nm (Under any water temp)

阀芯破坏强度：≥15Nm
 Broken torque : ≥15Nm

爆破压：≥35bar
 Burst pressure : ≥35bar

3bar水压下流量值：12°≥15L/min 23°≥29L/min
 Flow rate at 3bar : 12°≥15L/min 23°≥29L/min

寿命测试：EN817:2008 280,000cycles
 ASME A 112.18.1-2008 2,000,000cycles

Life cycle test : EN817:2008 280,000cycles
 ASME A 112.18.1-2008 2,000,000cycles



认证

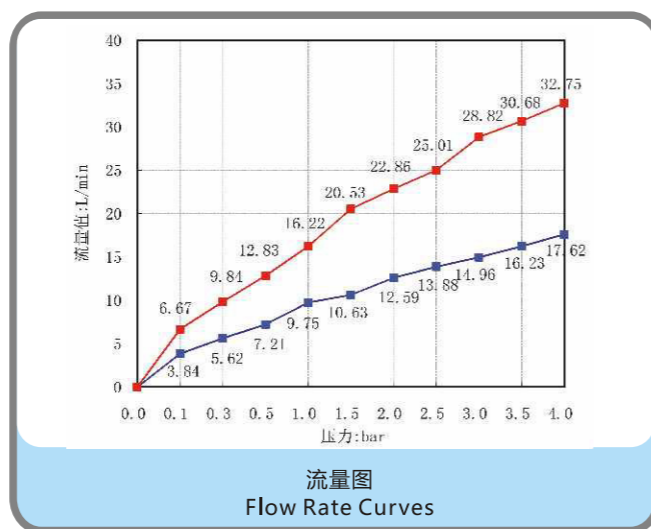
Certification



DVGW/KTW



ACS



安装尺寸图

Drawings of Mounting Dimensions

