

35002 35mm高脚阀芯

35mm high base cartridge

阀芯技术参数

Technical Characteristics of The Cartridge

开启角度：23° 旋转角度：90° 最高使用温度：90°C
 Max On/Off angel : 23° Max Cold/Hot turning angel : 100° Max temperature : 90°C

建议锁紧力矩：10~15Nm 冷热操作力矩：0.2~0.4Nm (任何水温)

Tightness of hex nut torque : 10~15Nm Cold / Hot operation torque : 0.2~0.4Nm (Under any water temp)

开关操作力矩：0.15~0.35Nm (任何水温)

On/Off operation torque : 0.15~0.35Nm (Under any water temp)

阀芯破坏强度：≥12Nm

Broken torque : ≥12Nm

爆破压：≥35bar

Burst pressure : ≥35bar

3bar水压下流量值：≥24L/min

Flow rate at 3bar : ≥24L/min

寿命测试：EN817:2008 280,000cycles
 ASME A 112.18.1-2008 2,000,000cycles

Life cycle test : EN817:2008 280,000cycles
 ASME A 112.18.1-2008 2,000,000cycles



认证

Certification

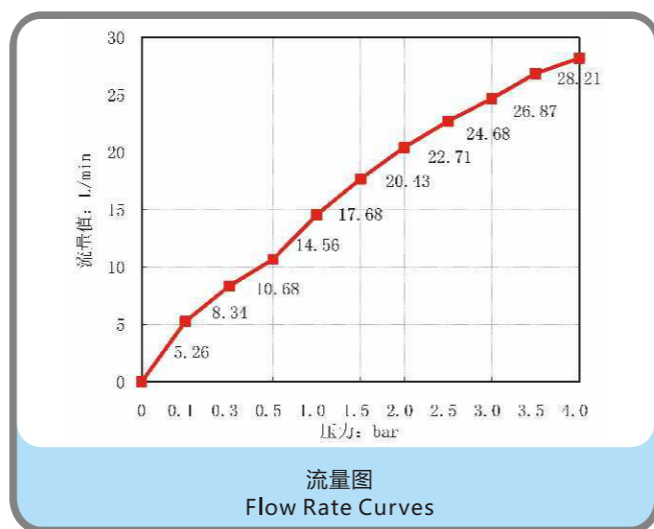


Certified to NSF/ANSI 61-G

DVGW/KTW



ACS



基本型

The basic type

满足您对水龙头安全舒适的用水需求
 In YJ Cartridge we make cartridges right

安装尺寸图

Drawings of Mounting Dimensions

