

25002 25mm高脚阀芯

25mm high base cartridge

阀芯技术参数

Technical Characteristics of The Cartridge

开启角度：23° 旋转角度：100° 最高使用温度：90°C
 Max On/Off angel : 23° Max Cold/Hot turning angel : 100° Max temperature : 90°C

建议锁紧力矩：6~8Nm 冷热操作力矩：0.15~0.3Nm
 Tightness of hex nut torque : 6~8Nm Cold / Hot operation torque : 0.15~0.3Nm

开关操作力矩：0.1~0.3Nm
 On/Off operation torque : 0.1~0.3Nm

阀芯破坏强度：≥8Nm
 Broken torque : ≥8Nm

爆破压：≥35bar
 Burst pressure : ≥35bar

3bar水压下流量值：≥12.5L/min
 Flow rate at 3bar : ≥12.5L/min

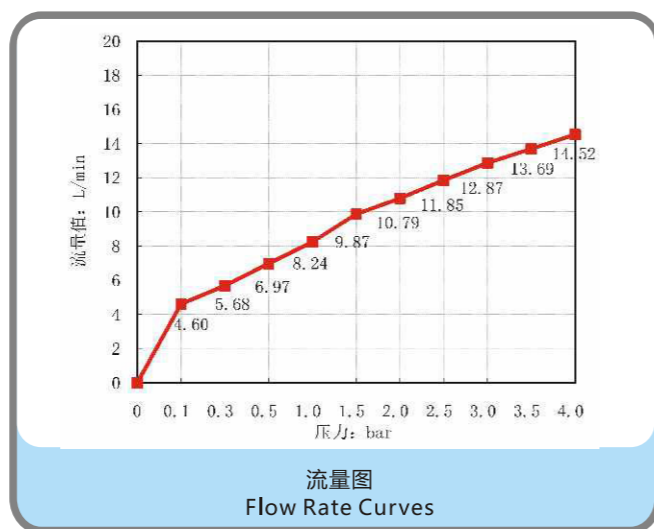
寿命测试：EN817:2008 140,000cycles
 ASME A 112.18.1-2008 1,000,000cycles

Life cycle test : EN817:2008 140,000cycles
 ASME A 112.18.1-2008 1,000,000cycles



认证

Certification



基本型

The basic type

满足您对水龙头安全舒适的用水需求
 In YJ Cartridge we make cartridges right

安装尺寸图

Drawings of Mounting Dimensions

